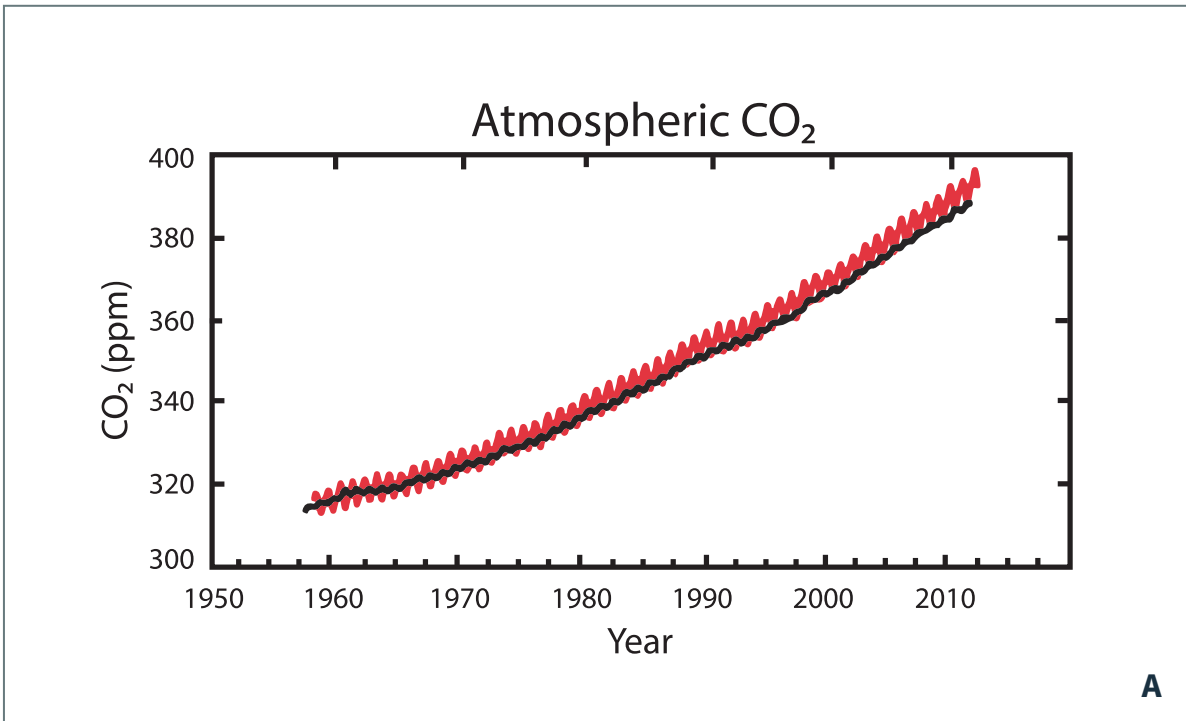




Climate Impact Graphs Matching

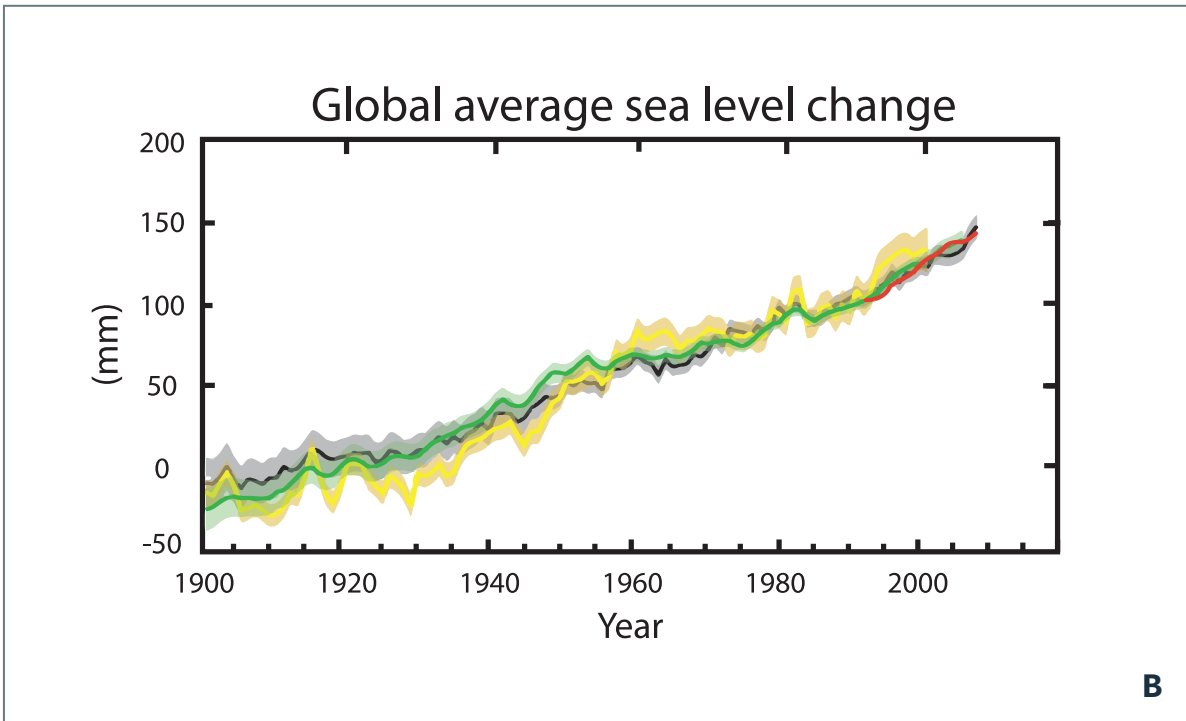


“There’s more CO₂ in the atmosphere now than there used to be. CO₂ is carbon dioxide and it causes the air to hold heat.”

7



Climate Impact Graphs Matching

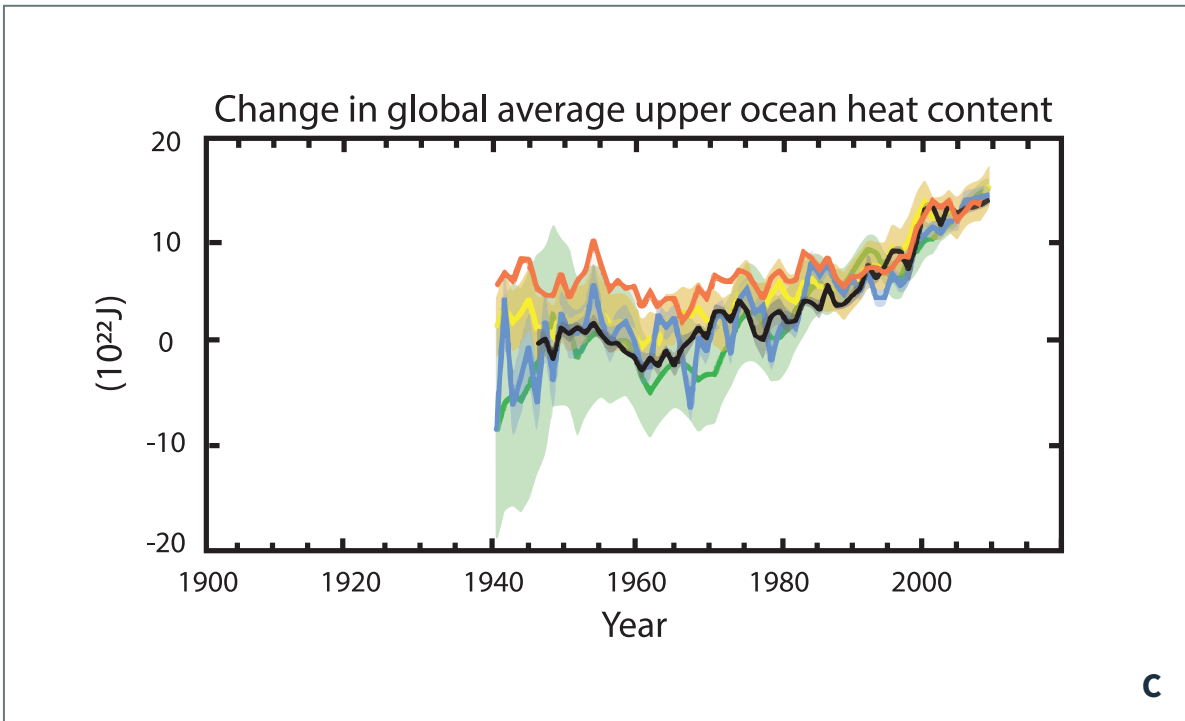


“Sea level is going up as climate warms. This makes towns and cities near the ocean at risk of flooding.”

6



Climate Impact Graphs Matching

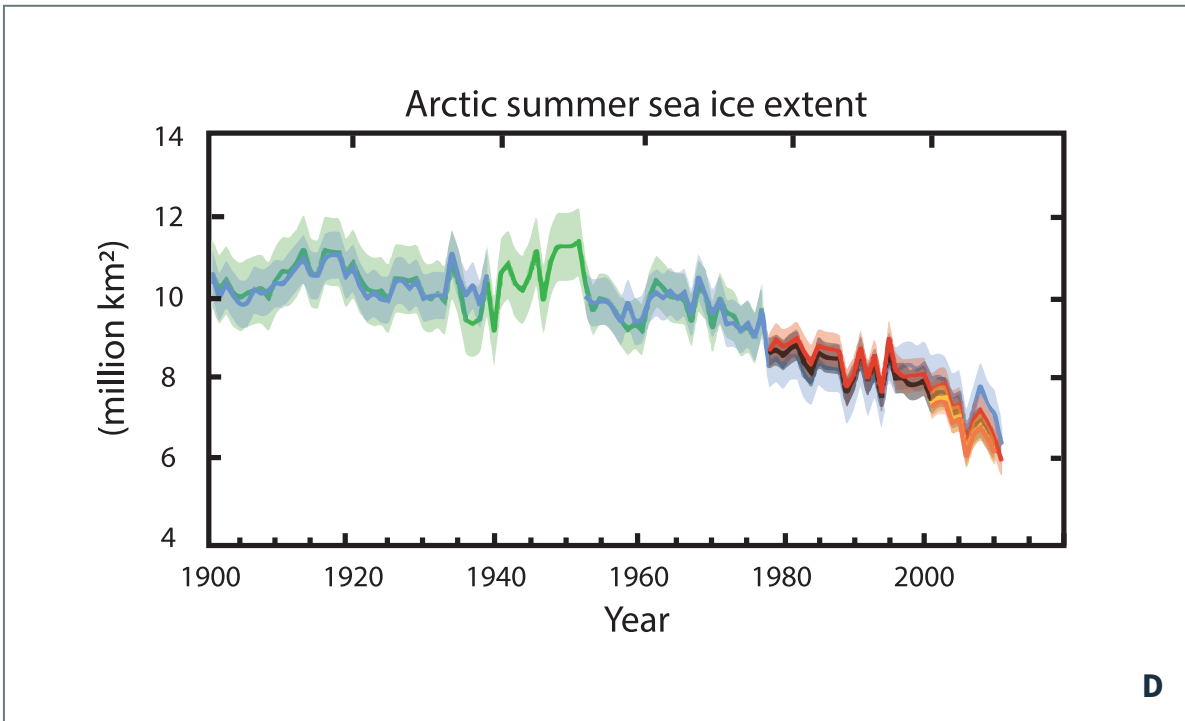


“The oceans are getting warmer.”

5



Climate Impact Graphs Matching

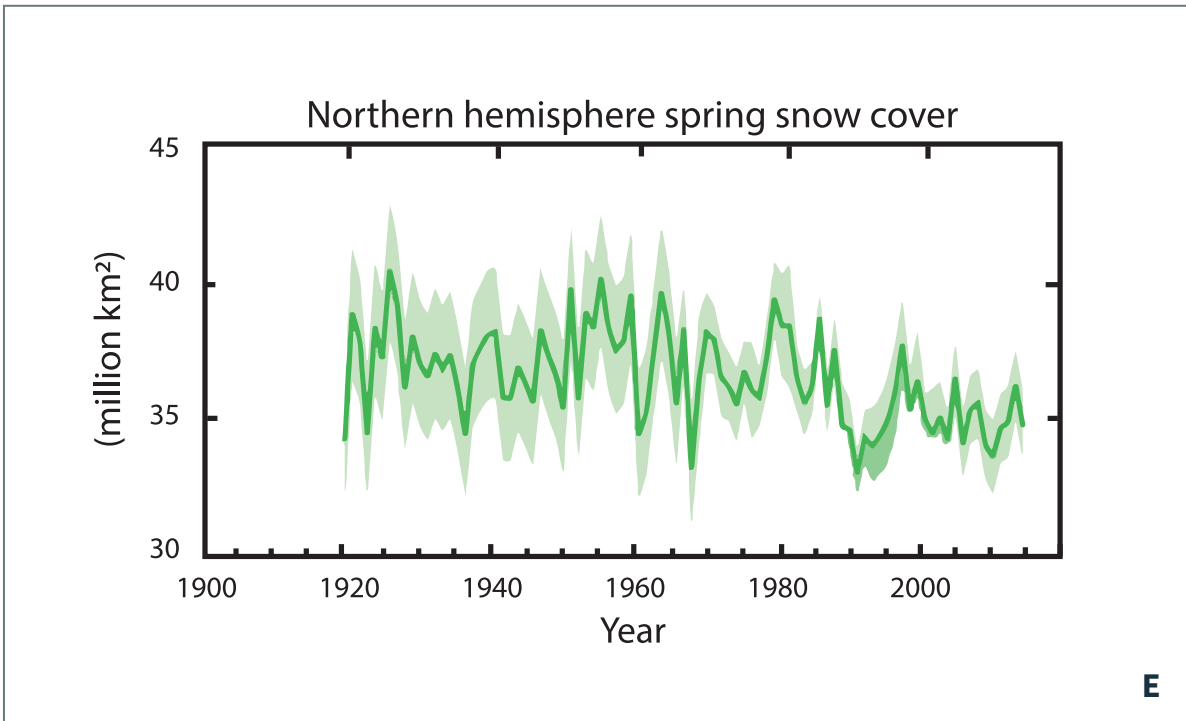


“There is about half the amount of ice near the North Pole than there used to be.”

4



Climate Impact Graphs Matching

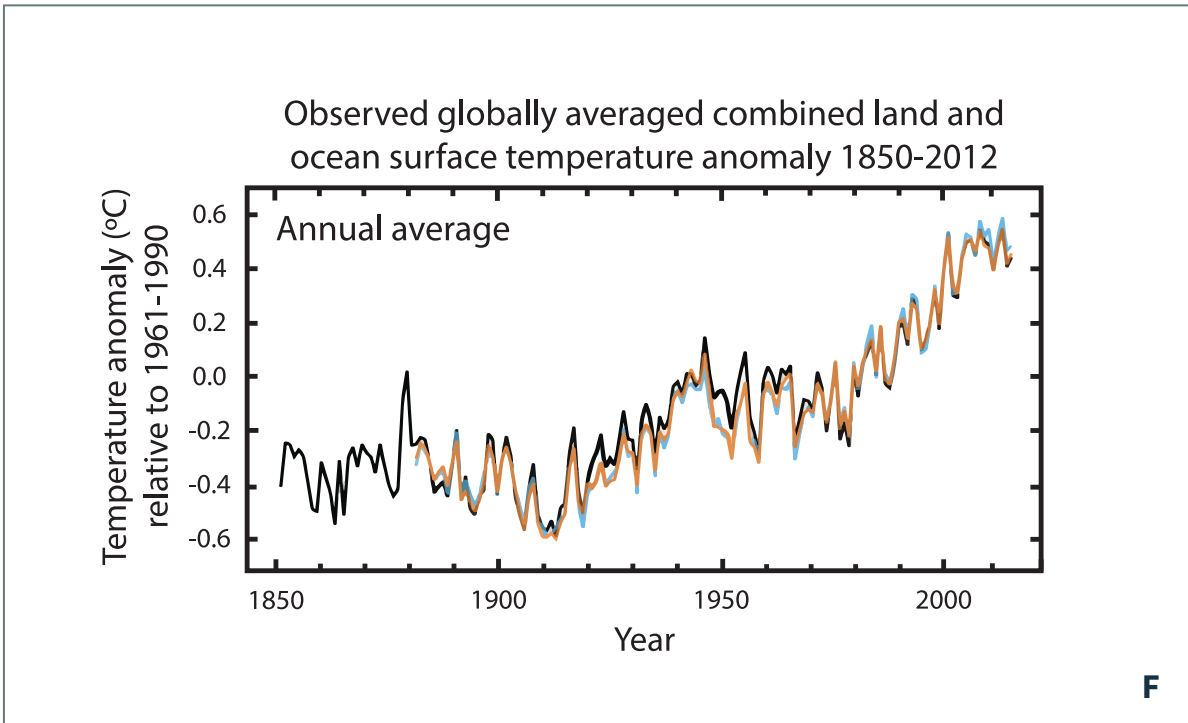
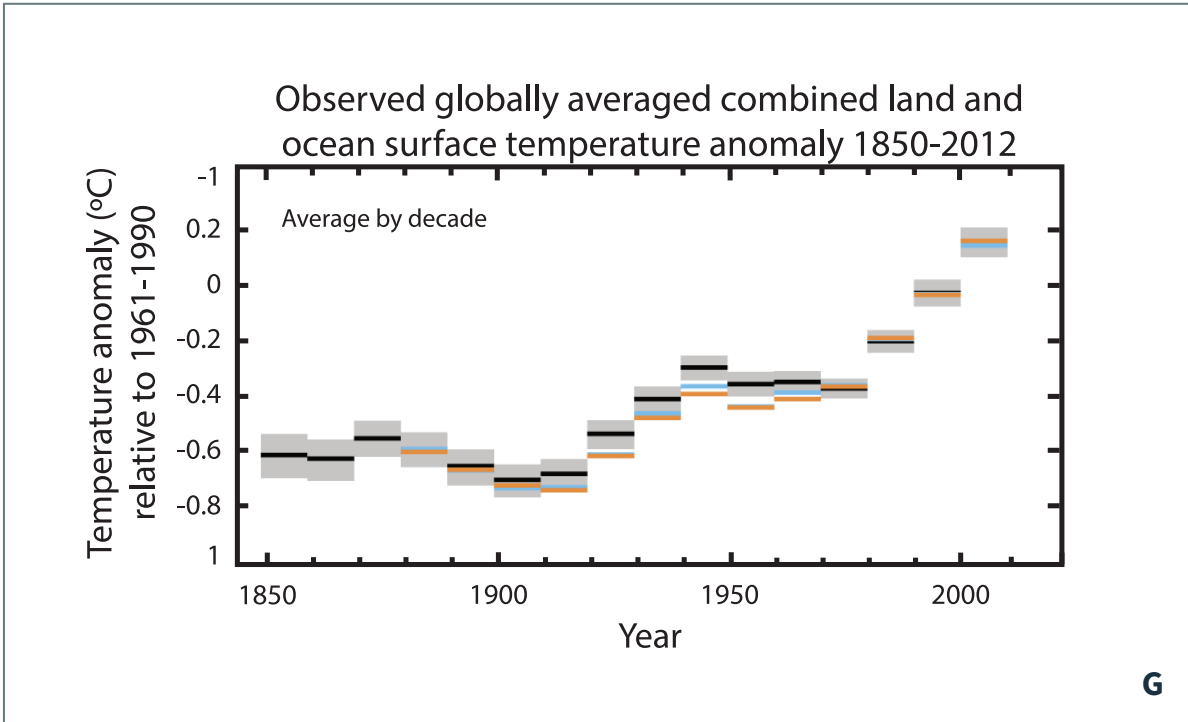


“My grandmother says that winters are less snowy now than they were when she was a kid in the 1950s.”

3



Climate Impact Graphs Matching





Climate Impact Graphs Matching

“Sure, there’s some variation, but, in general, climate is getting warmer.”

2

“On average, the 1980s were warmer than the 1970s, the 1990s were warmer than the 1980s, and the 2000s were warmer than the 1990s.”

1



Climate Impact Graphs Matching

“Climate varies so much year to year that you can’t see a trend over time.”

8

“On average, the 1980s were cooler than the 1970s, the 1990s were cooler than the 1980s, and the 2000s were cooler than the 1990s,”

9



Climate Impact Graphs Matching

“Since 1960 sea level has increased nearly 100 meters.”

10

“There is twice as much carbon dioxide in the atmosphere than there was in 1960.”

11



Climate Impact Graphs Matching

“In the northern hemisphere, there’s more snow in January and February than there is during spring.”

12

“The upper ocean grows warmer over time while the deep ocean grows colder over time.”

13



Climate Impact Graphs Matching

“Each year, sea ice in the Arctic grows larger during the winter and melts during the summer.”

14