



Interactive Story Map

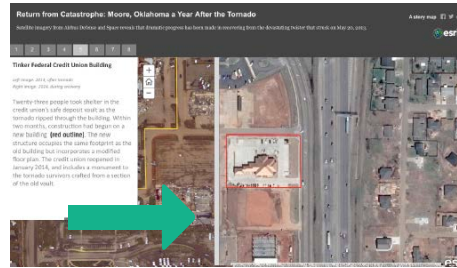
Student Sheet A: Return from Catastrophe: Moore, Oklahoma a Year After the Tornado

STORY MAP ▶ <http://storymaps.esri.com/stories/2014/moore-one-year-after/#>

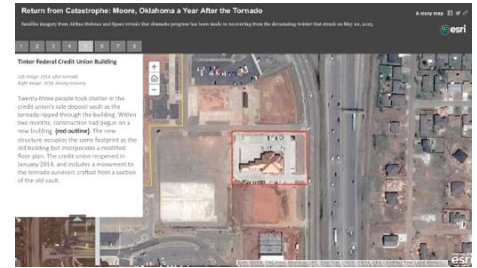
To explore, you can zoom in and out, and move the map out by clicking on it, and move the gray bar to see the before and after images.



After the tornado, before recovery



You can slide the gray bar to see the difference before and after the recover period



After recovery

Answer the following questions.

1. What are the first things you notice about the area you are exploring?

2. Which buildings were affected by the tornado in area you are exploring?

3. Write a description of the impacts of the tornado on this tab (What did the community look like after the tornado? What type of damage occurred?)



Interactive Story Map

Student Sheet A: Return from Catastrophe: Moore, Oklahoma a Year After the Tornado

4. *What did people do in this area to stay safe when the tornado hit?*

5. *What did people do to recover the property? And who was involved?*

6. Using at least two additional sources, document specific recovery efforts about this piece of property (For sources you can use online articles, media reports, community news reports).

Source	What the source described about the recovery effort.