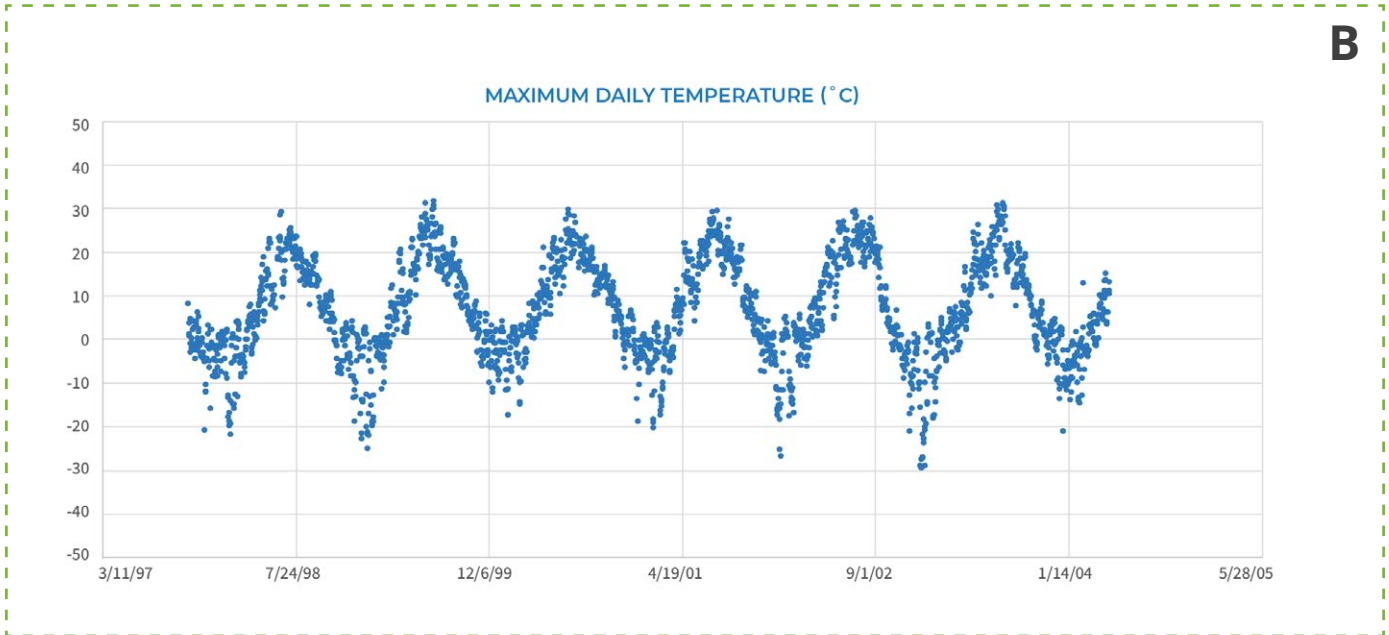
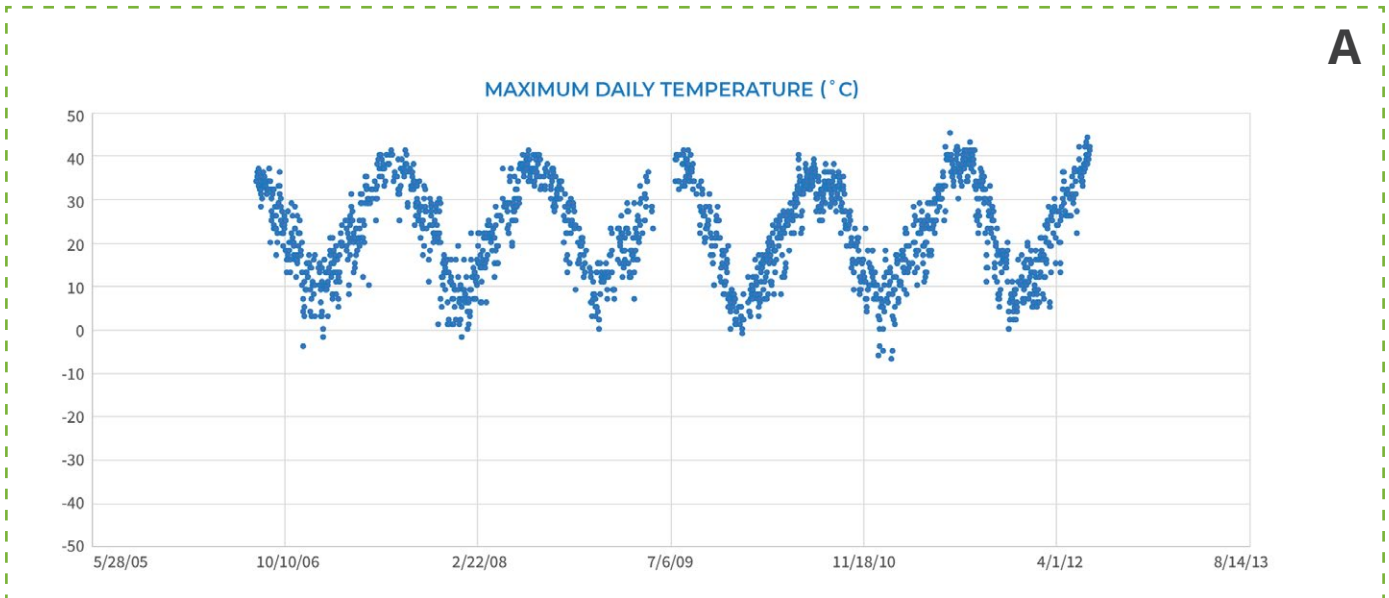
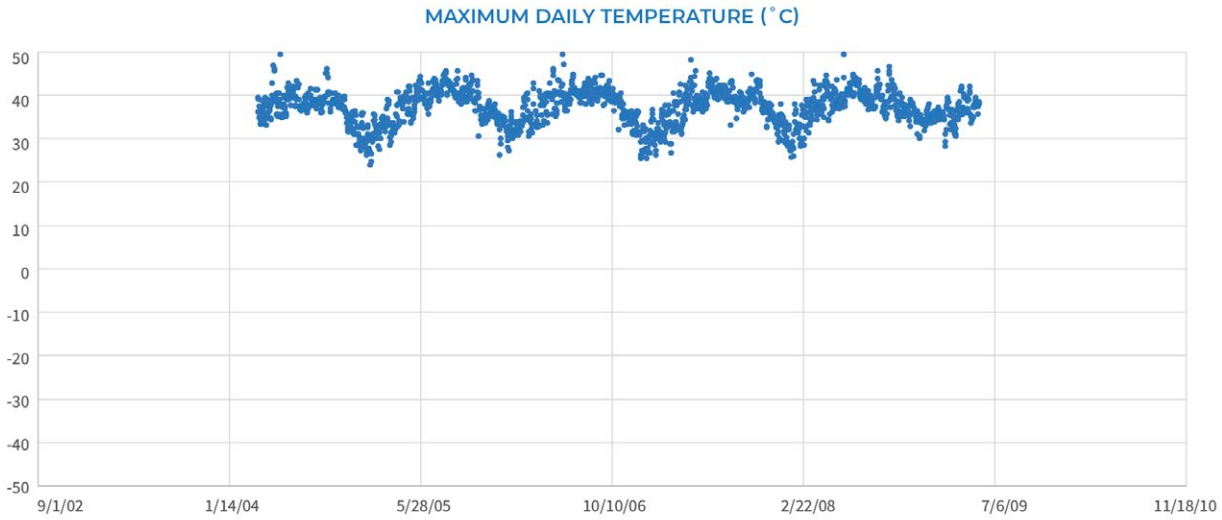


NOTE: Cut apart the graphs and maps on the following four pages for each student group. (Use the highest/lowest temperature cards if students need support to interpret graphs.)

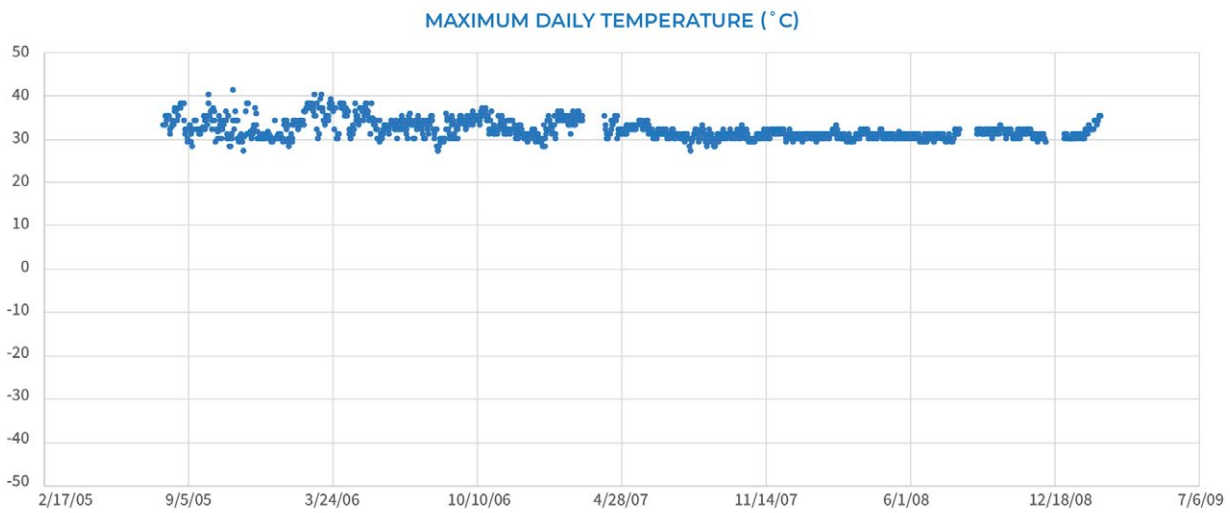


F	lowest max temperature 24°C	highest max temperature 49°C
G	lowest max temperature 27°C	highest max temperature 41°C
H	lowest max temperature -7°C	highest max temperature 44°C
I	lowest max temperature -30°C	highest max temperature 30°C
J	lowest max temperature -22°C	highest max temperature 35°C

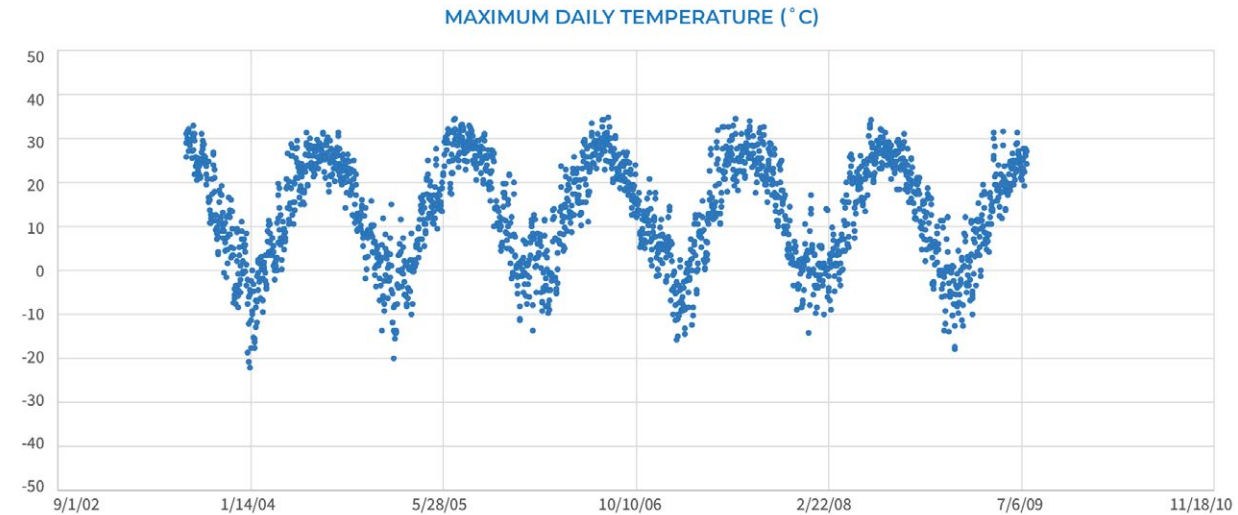
C



D



E

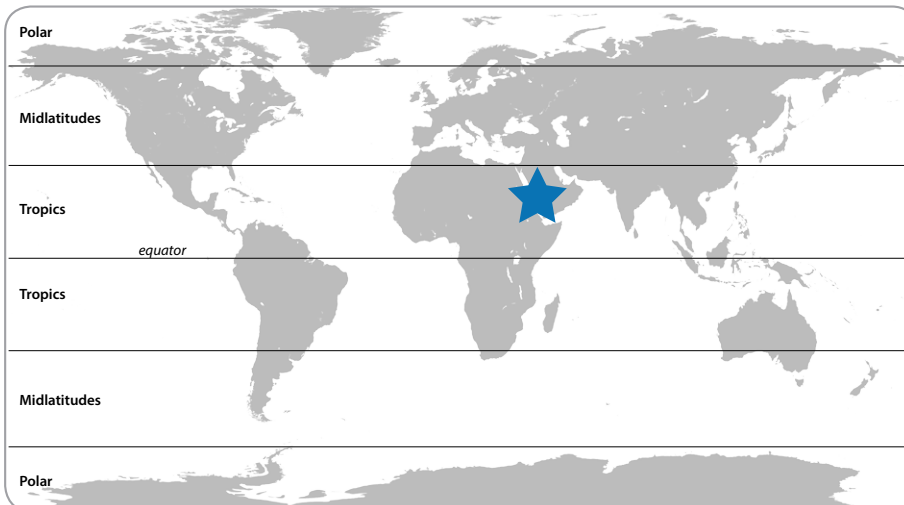


Location:
Saudi Arabia

Latitude:
21.3725

Distance from
the equator:
2,372 km

N

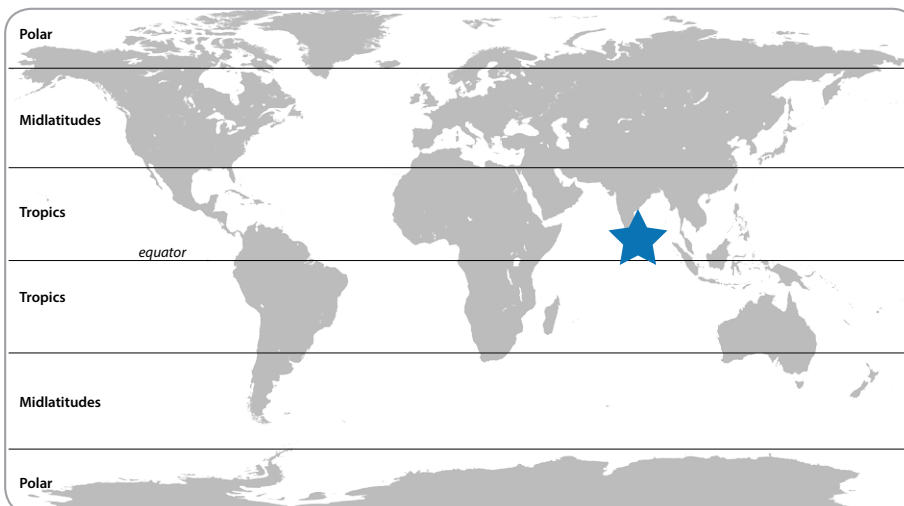


Location:
Sri Lanka

Latitude:
7.1438

Distance from
the equator:
793 km

O

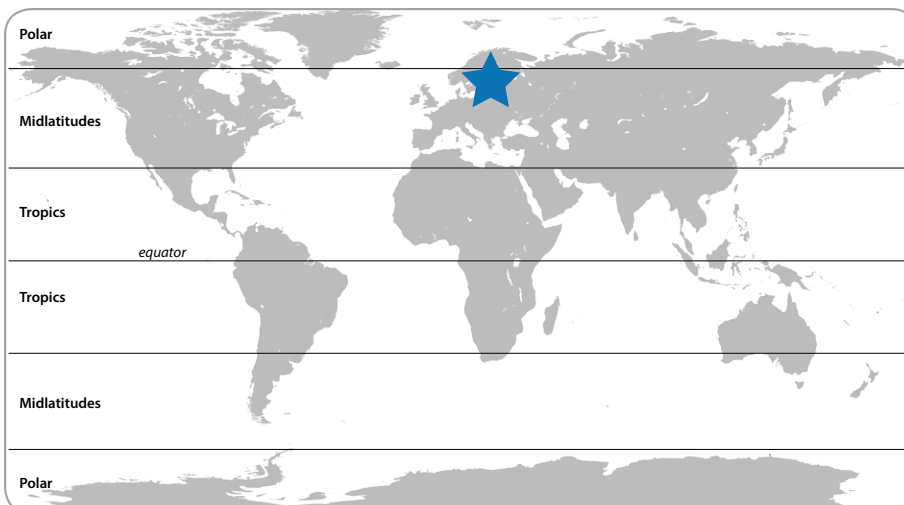


Location:
Finland

Latitude:
63.2377

Distance from
the equator:
7,020 km

K

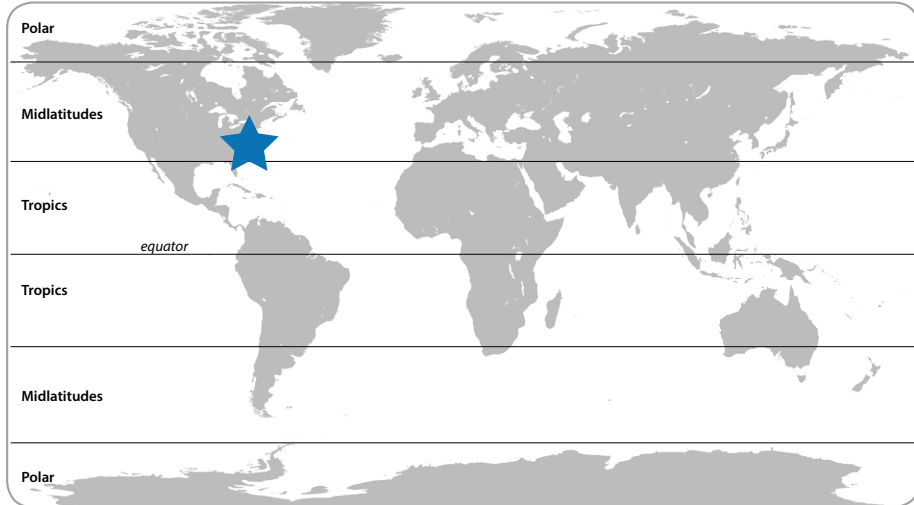


Location:
Vermont, US

Latitude:
44.675

Distance from
the equator:
4,959 km

L



Location:
Arizona, US

Latitude:
36.4493

Distance from
the equator:
4,046 km

M

